



DSA BULLETIN 08-06

Effective

Date: June 16, 2008

To: **DSA Staff and Interested Parties**

From: **Division of the State Architect
Department of General Services
State of California**

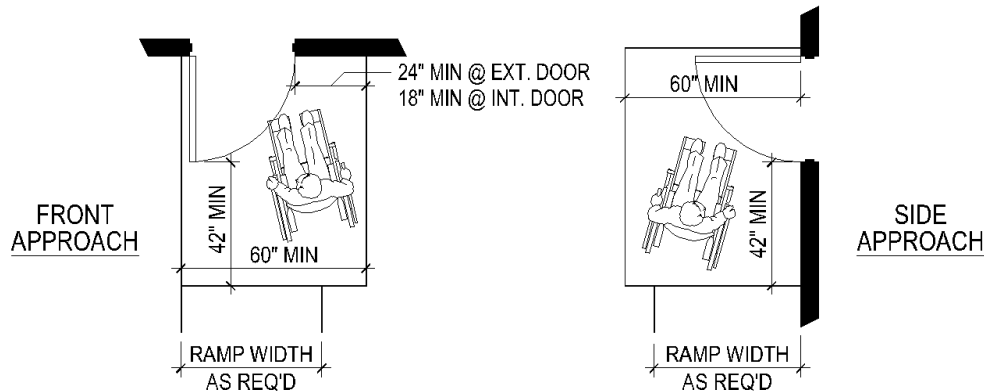
SUBJECT: **Ramps at Relocatable Buildings**

Purpose: The purpose of this bulletin is to clarify the requirements for exterior ramps that are moved when an existing relocatable building is relocated.

Discussion: For more than 30 years the building code has indicated doors in any position shall not reduce the minimum dimension of a ramp landing to less than 42 inches. An example of this requirement is represented at Figure 33-11B in the 1988 & 1991 CBC and Figure 11B-39 in the 1988 through 2007 CBC.

DSA has observed an increase in instances where doors reduce the minimum dimension of ramp landings to less than 42 inches.

Graphic examples indicating compliance with the 42" requirement are shown below:



Upgrades to Existing Ramp Installations: Submittals received by DSA that indicate an existing ramp is being moved to a new location shall indicate that the ramp either already complies with the 42" requirement or it is being altered to comply with the 42" requirement.

If an existing ramp to be relocated complies with the 42" landing requirement, the submittal must include the DSA approved drawing for the existing ramp which indicates compliance.

If an existing ramp to be relocated is being altered to comply with the 42" landing requirement, the submittal must include revised structural drawings and calculations for the alteration and a note on the cover sheet of the relocation drawings which indicates that the ramp landing must be reconstructed in accordance with the revised drawings.