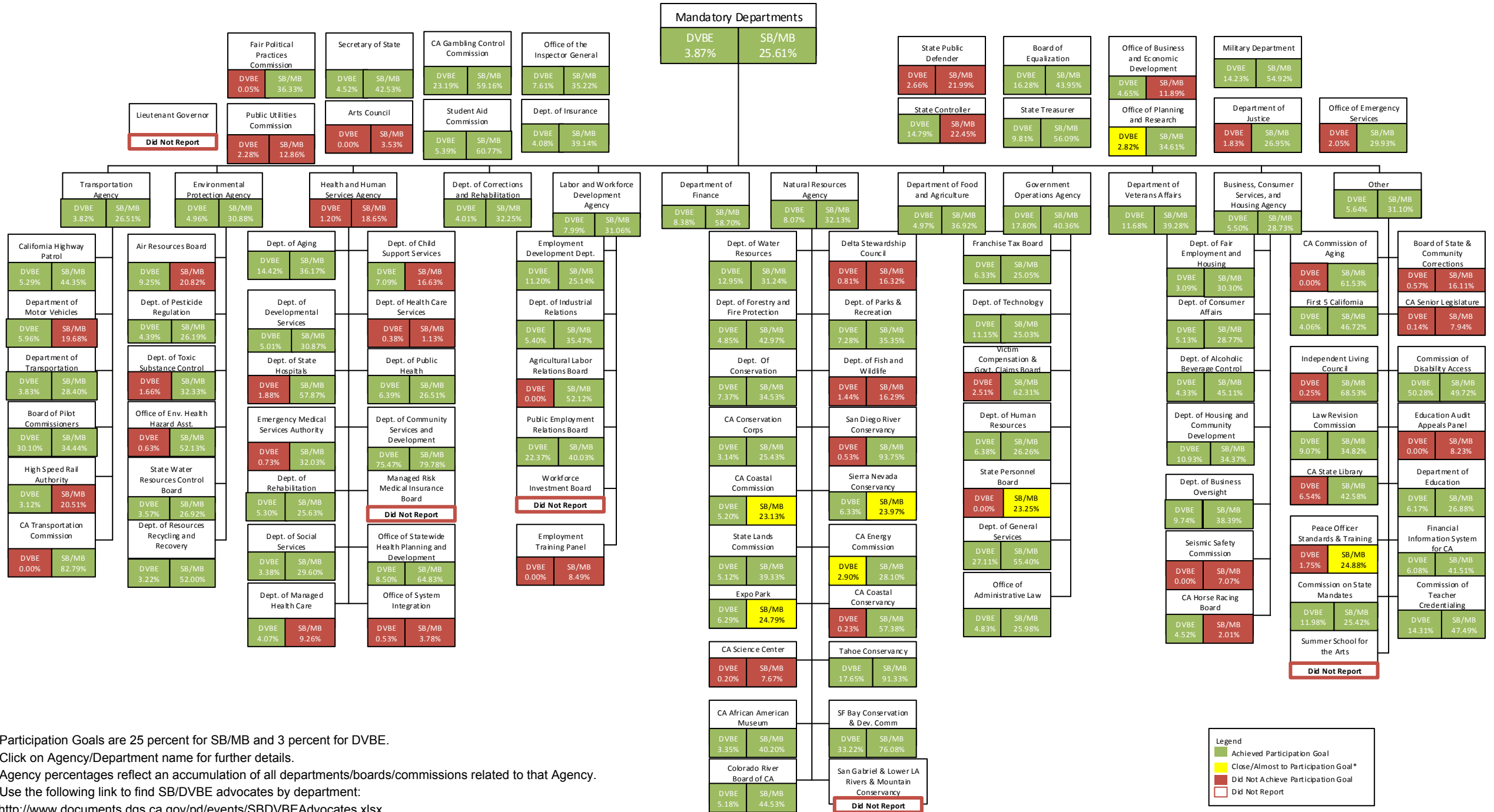


# Small Business (SB) and Disabled Veteran Business Enterprise (DVBE) Participation in State Contracting Fiscal Year 2014-2015



- Participation Goals are 25 percent for SB/MB and 3 percent for DVBE.
- Click on Agency/Department name for further details.
- Agency percentages reflect an accumulation of all departments/boards/commissions related to that Agency.
- Use the following link to find SB/DVBE advocates by department:  
<http://www.documents.dgs.ca.gov/pd/events/SBDVBEAdvocates.xlsx>

**Legend**

- Achieved Participation Goal
- Close/Almost to Participation Goal\*
- Did Not Achieve Participation Goal
- Did Not Report

\* Departments within 10 percent of achieving percentage goals were considered close/almost to participation goal.

- For SB/MBs: Less than 25 percent and greater or equal to 23 percent.
- For DVBEs: Less than 3 percent and greater or equal to 2.7 percent.