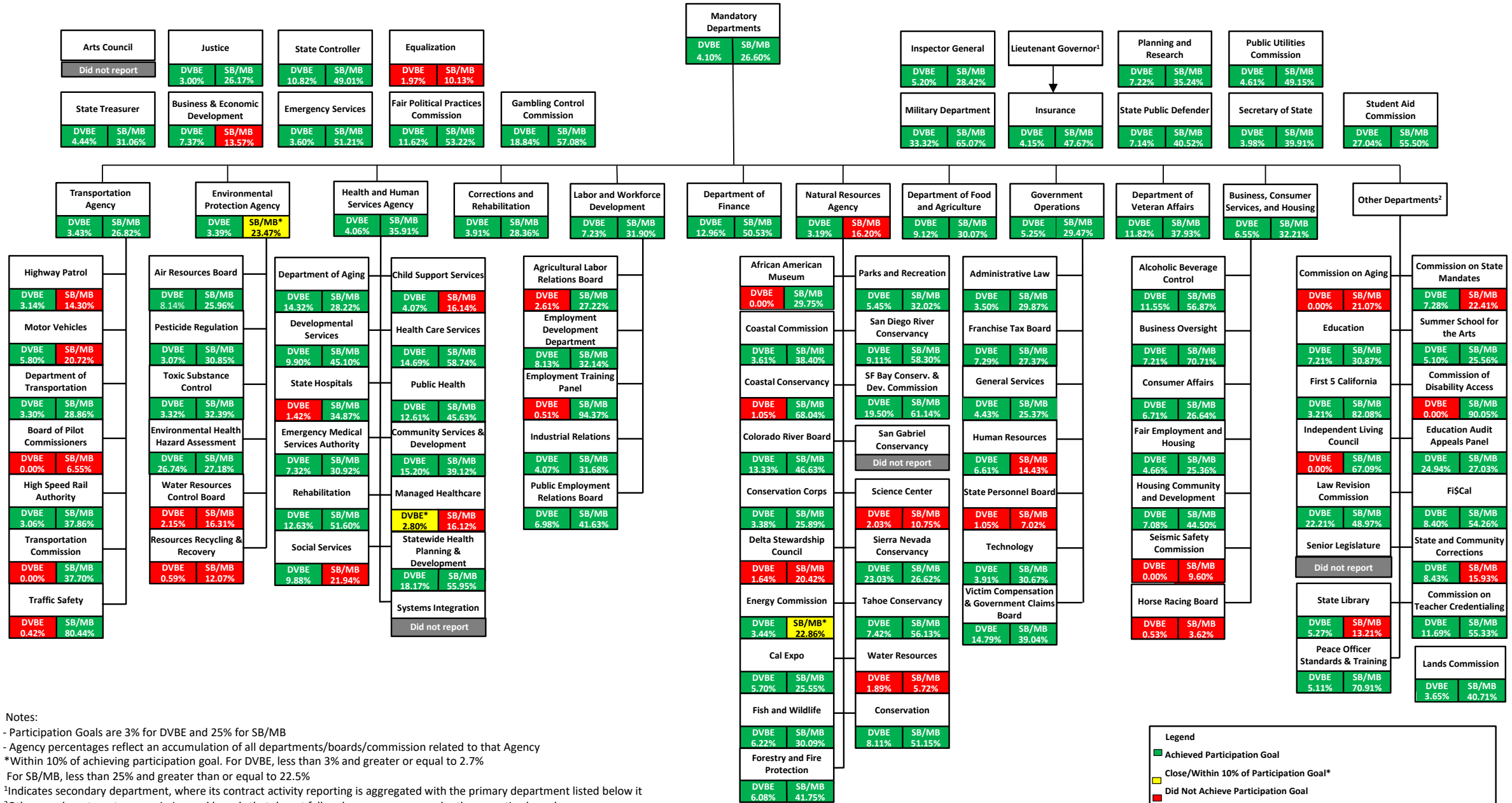


Small Business (SB) and Disabled Veteran Business Enterprise (DVBE) Participation in State Contracting Fiscal Year 2016-2017



Notes:
 - Participation Goals are 3% for DVBE and 25% for SB/MB
 - Agency percentages reflect an accumulation of all departments/boards/commission related to that Agency
 *Within 10% of achieving participation goal. For DVBE, less than 3% and greater or equal to 2.7%
 For SB/MB, less than 25% and greater than or equal to 22.5%
¹Indicates secondary department, where its contract activity reporting is aggregated with the primary department listed below it
²Other are departments, commission and boards that do not fall under an agency or under the executive branch
³The Department of General Services current reporting is based on partial data, hence subject to change as information is available

Legend	
	Achieved Participation Goal
	Close/Within 10% of Participation Goal*
	Did Not Achieve Participation Goal
	Did Not Report